



EDANUSA

www.edanusa.com



DUS 6

Technical Specifications



Convex array:
C363-1



Micro-convex array:
C321



Endovaginal:
E613



Convex array:
C343-1



Linear array:
L743



Endorectal:
E743

General:

Imaging mode: B,B+B,4B,B+M,M
 Gray scales: 256
 Display: 10" non-interlaced
 Transducer frequency:
 2.0-10.0 MHz
 Transducer connector:
 2 standard
 Beam-forming:
 Digital Beam-forming
 Dynamic Receiving Focusing
 Real-time Dynamic Aperture
 Dynamic Frequency Scanning
 Dynamic Apodization
 Tissue Harmonic Imaging
 Tissue Specific Imaging
 Scanning angle: from 30 to 155 degree (depending on transducers)
 Scanning depth (mm):
 from 20 to 250 (depending on transducers)

Imaging Processing:

Pre-processing: Dynamic range
 Edge enhancement
 Frame correlation
 Line correlation
 Smooth
 AGC
 8-segment TGC adjustment
 IP (Image Process)
 Post-processing: Gray map
 Gamma correction
 Rejection
 Black / white reverse
 Left / right reverse
 Up / down reverse
 Image rotation at 90 degree interval

Functions:

Cine loop: 256 frames bidirectional cine-loop
 Zoom: X1.0, X1.2, X1.4, X1.6, X2.0, X2.4,
 X3.0, X4.0 in distance
 Storage media: Built-in Flash, External USB-Memory stick
 Storage: 56 MB permanent image
 Body mark: >130 types
 Transducer auto-detection
 16-segment acoustic power output adjustment

Measurement & Calculation:

B-mode: distance, circumference, area, volume, angle,
 ratio, %stenosis
 M-mode: distance, time, velocity, heart rate (2 cycles), slope
 Software packages:
 abdomen, gynecology, obstetrics, urology,
 small parts, cardiology, orthopedics

Display:

Date, Time, Probe Name, Probe Frequency, Frame Rate,
 Patient Name, Patient ID, Hospital Name, Measurement Values,
 Body Marks, Annotation, Probe Position, Full-image-region edit

Others:

Peripheral port: Video output X1
 VGA output port X1
 USB port X2
 DICOM3.0 X1 (optional)
 Power supply: 100V-240V~50Hz/60Hz
 Dimensions: 353mm(W) X 315mm(L) X 253mm(H)
 Net weight: 11.5 kg

Standard Configurations:

DUS 6 main unit
 10" non-interlaced monitor
 Two transducer connectors
 256 frames cine loop memory
 56MB built-in image storage
 Two USB ports
 Measurement & calculation software packages
 Convex array transducer:
 C363-1 (2.0/3.0/4.0/5.0/6.0 MHz)

Options:

Linear array transducer:
 L743 (6.0/7.0/8.0/9.0/10.0 MHz)
 Endorectal transducer:
 E743 (6.0/7.0/8.0/9.0/10.0 MHz)
 Endovaginal transducer:
 E613 (4.5/5.5/6.5/7.5/8.5 MHz)
 Micro-convex array transducer:
 C321 (2.0/3.0/4.0/5.0/6.0 MHz)
 Convex array transducer:
 C343-1 (2.0/3.0/4.0/5.0/6.0 MHz)
 Video printer
 Laser printer
 Inkjet printer
 Biopsy guide
 DICOM 3.0
 Footswitch
 Mobile trolley
 Hand carried bag



EDANUSA

4901 Morena Blvd., Suite 505
 San Deigo, CA 92117
 Tel: 888.850.4597



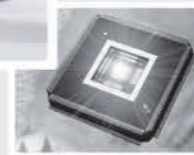
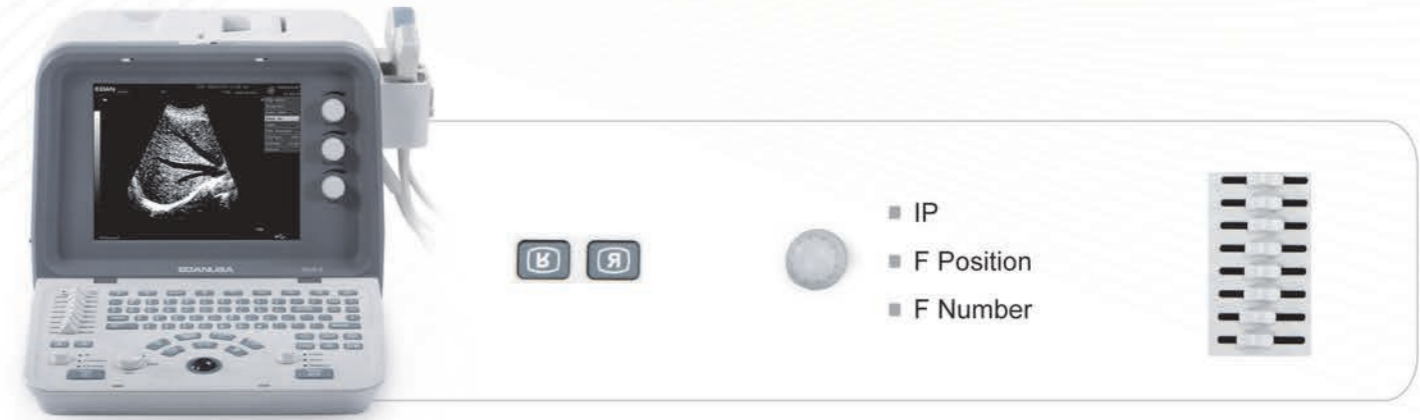
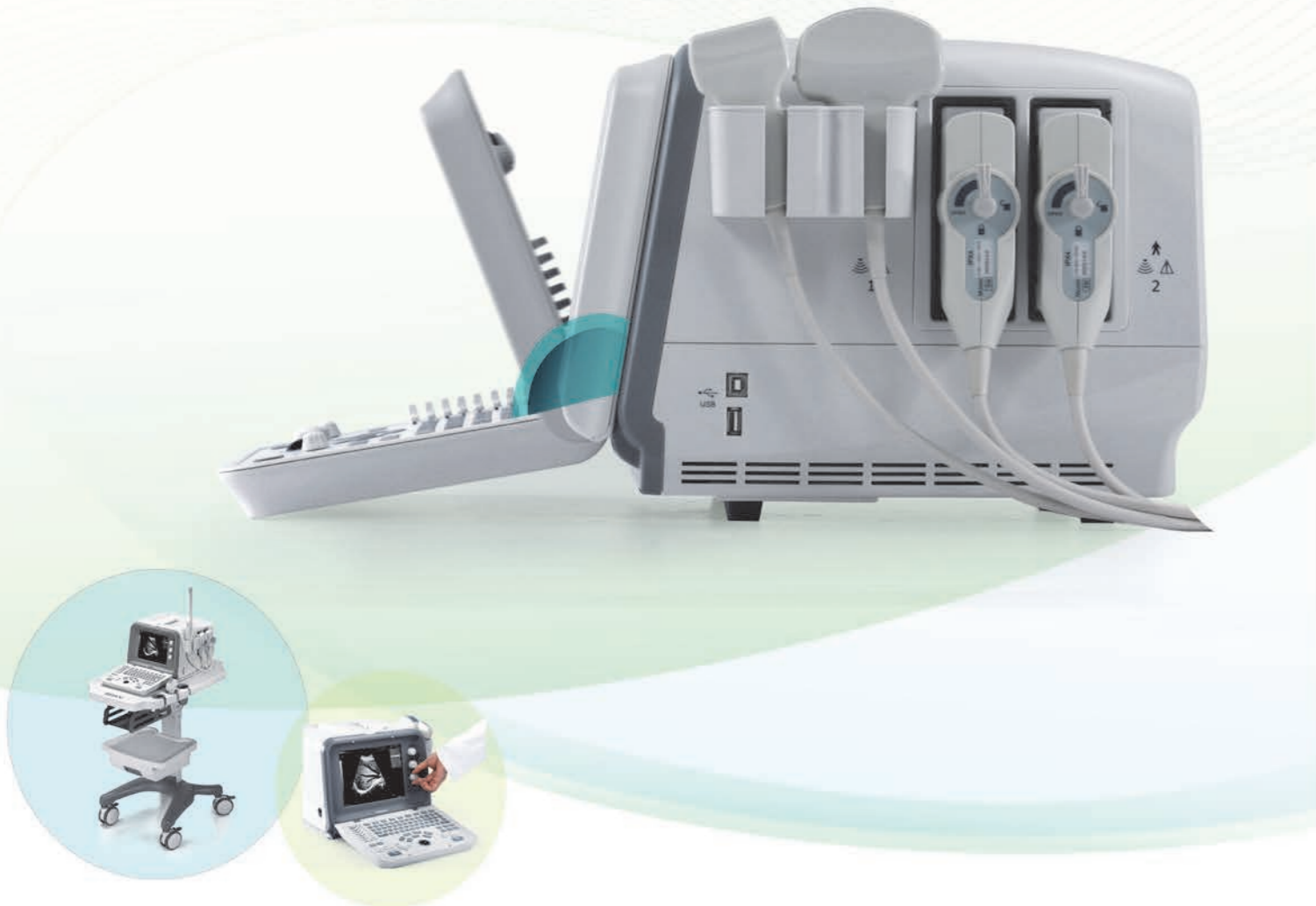
Distributor:

Digital Ultrasonic Diagnostic Imaging System

All rights reserved.
 Features and specifications are subject to change without prior notice

ENG-US-DUS 6-V1.1-20120523

Care for Health



➤ Innovative Technology

DUS 6, powered by innovative technology, optimizes imaging precision and ensures the reality and perfection of images.

- Dynamic Frequency Scan (DFS)
- Real-time Dynamic Aperture (RDA)
- Dynamic Receiving Apodization (DRA)
- Digital Beam-forming (DBF)
- Multi-zone Transmitting Focusing (MTF)
- Dynamic Receiving Focusing (DRF)

➤ Comprehensive Applications

With a variety of multi-frequency transducers, and abundant measurements and calculation software packages, DUS 6 insures optimal images and solid diagnosis confidence for each clinical application.

➤ Powerful Functions

- IP (Image Processing) Function
- Ergonomic Backlight Keyboard Design
- Intelligent 8-segment TGC adjustment
- Panoramic Zoom Function

➤ Excellent Features

- DUS 6 includes these features which are usually unique to higher end systems
- 256-frame cine loop
- 56MB image storage
- VGA output
- Dual USB port
- DICOM 3.0 (optional)

DUS 6

➤ With advanced digital beam-forming (DBF) technology, EDAN focuses on Ultrasound applications that will create new clinical value for you and your patients. Furthermore, the 56MB built-in image storage and standard configuration of two-transducer-connector bring along with more options and flexibility.

